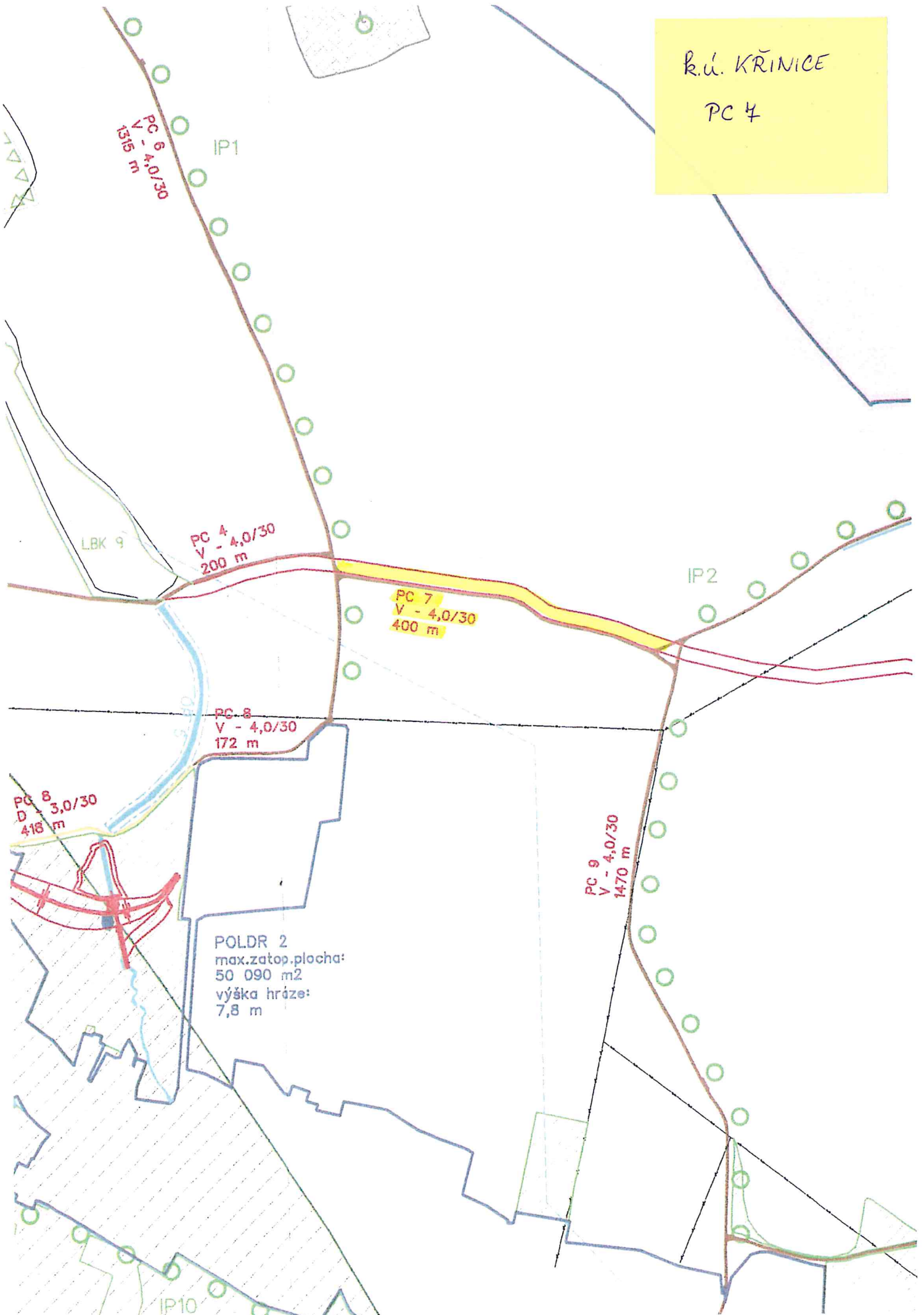
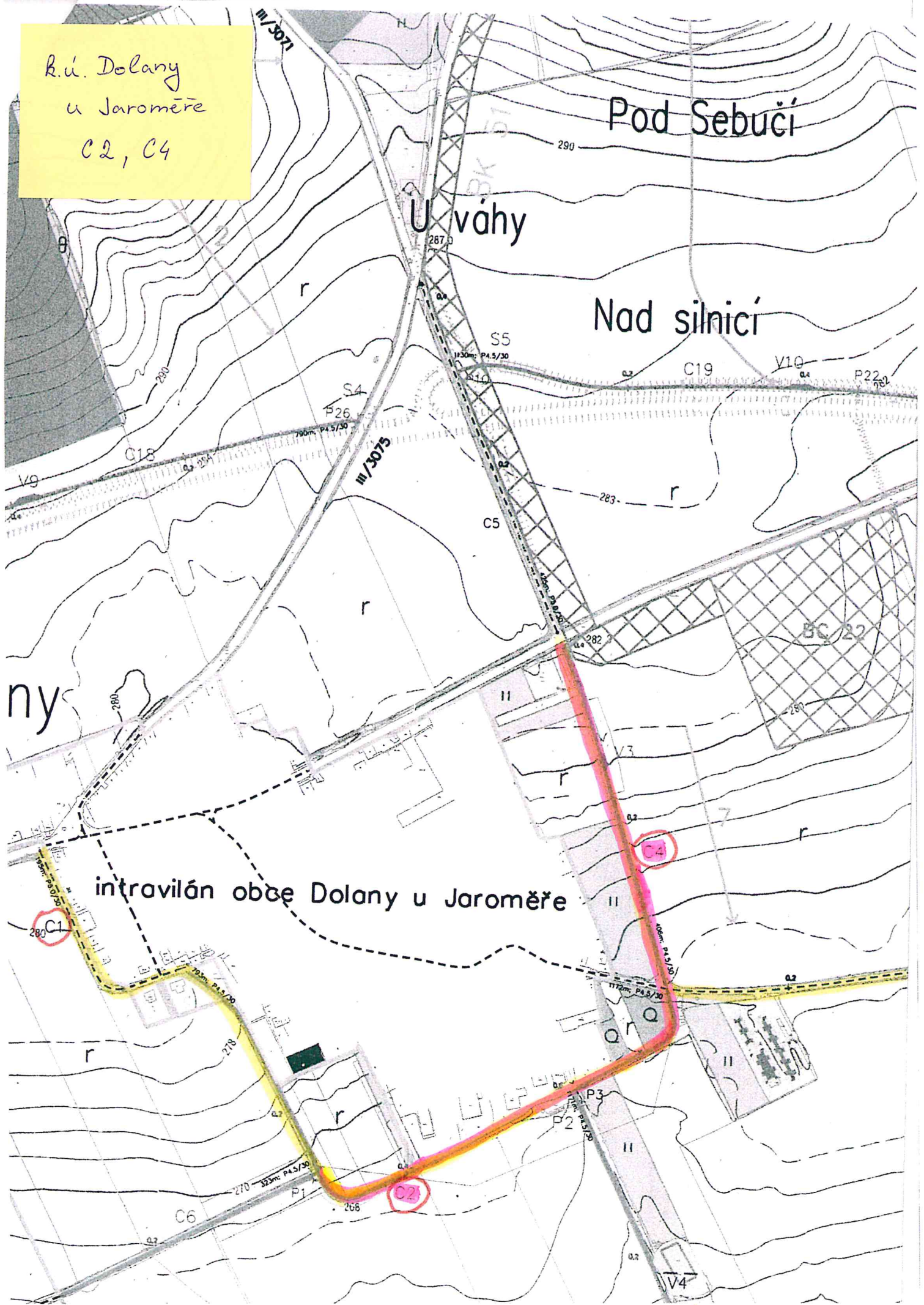


R.Ú. KRINICE

PC 4

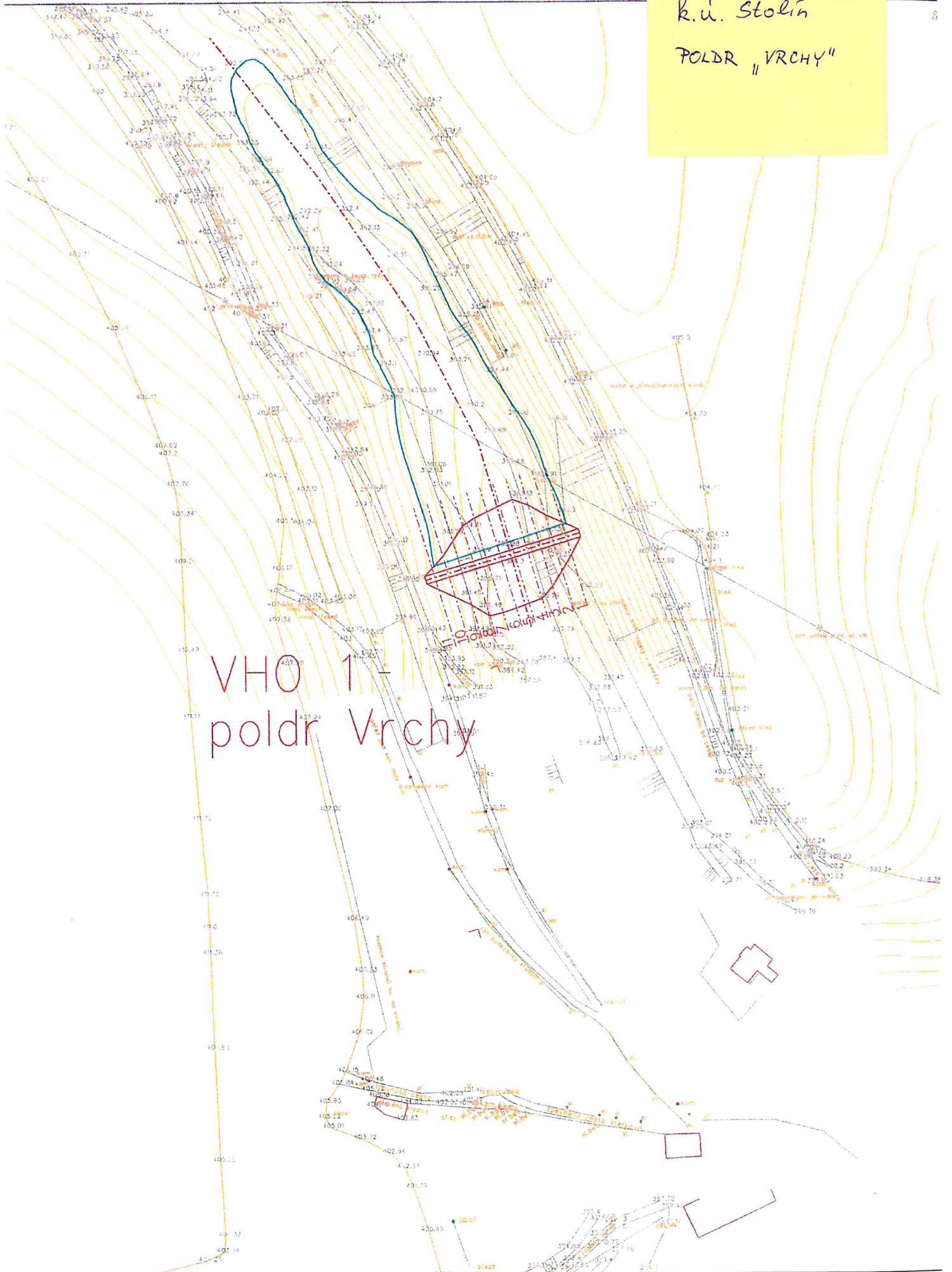


k.ú. Dolany
u Jaroměře
C2, C4



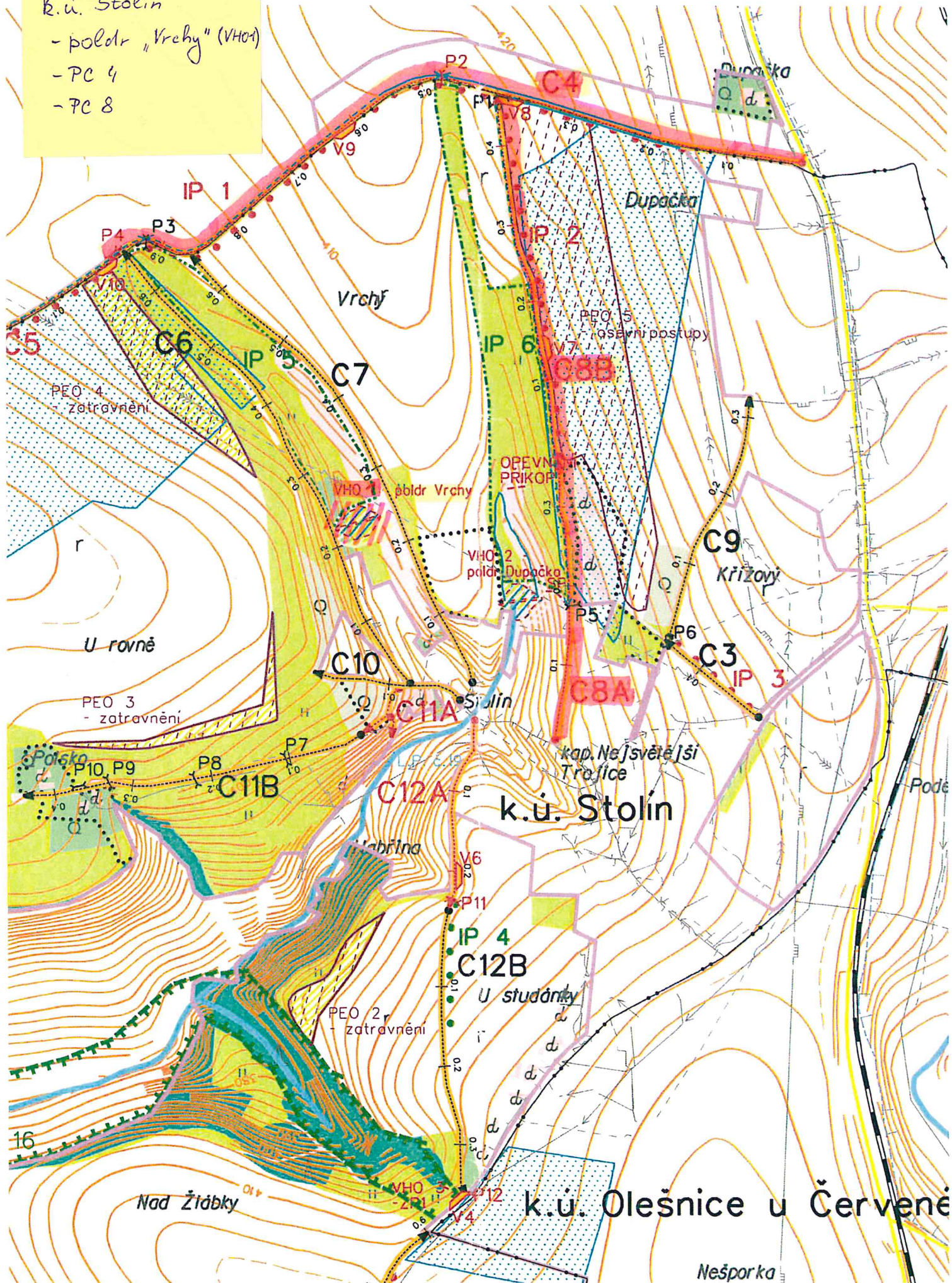
k.ú. Stolín
POLDR „VRCHY“

VHO 1 -
poldr vrchy



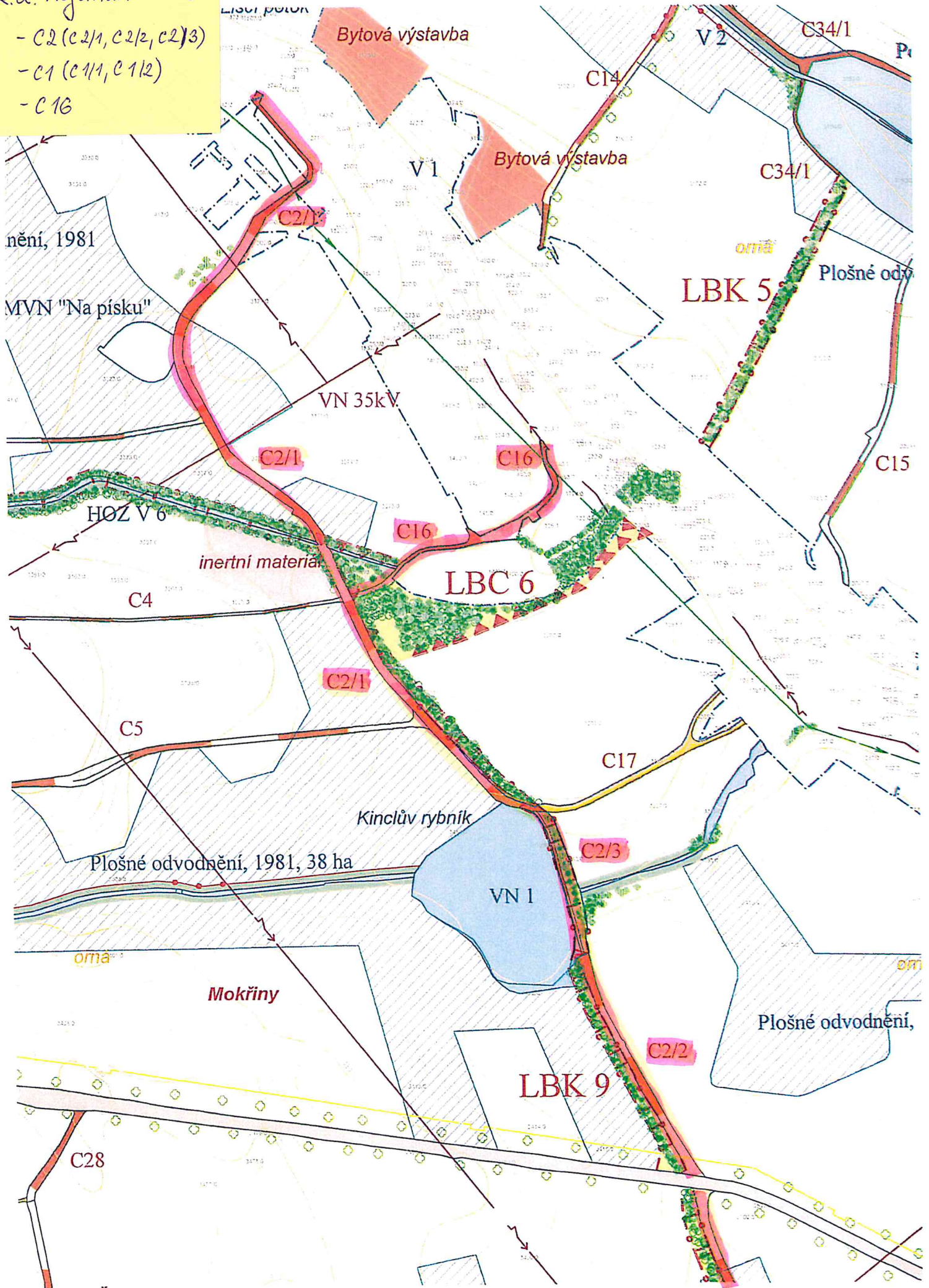
k.ú. Stolín

- poldr "Vrchy" (VHO-1)
- PC 4
- PC 8



R.ú. Hejtmánkovice

- C2 (C2/1, C2/2, C2/3)
- C1 (C1/1, C1/2)
- C16



nění, 1981

MVN "Na písku"

VN 35kV

HOZ V 6

inertní materiá

Kinclův rybník

Plošné odvodnění, 1981, 38 ha

Mokřiny

Plošné odvodnění,

